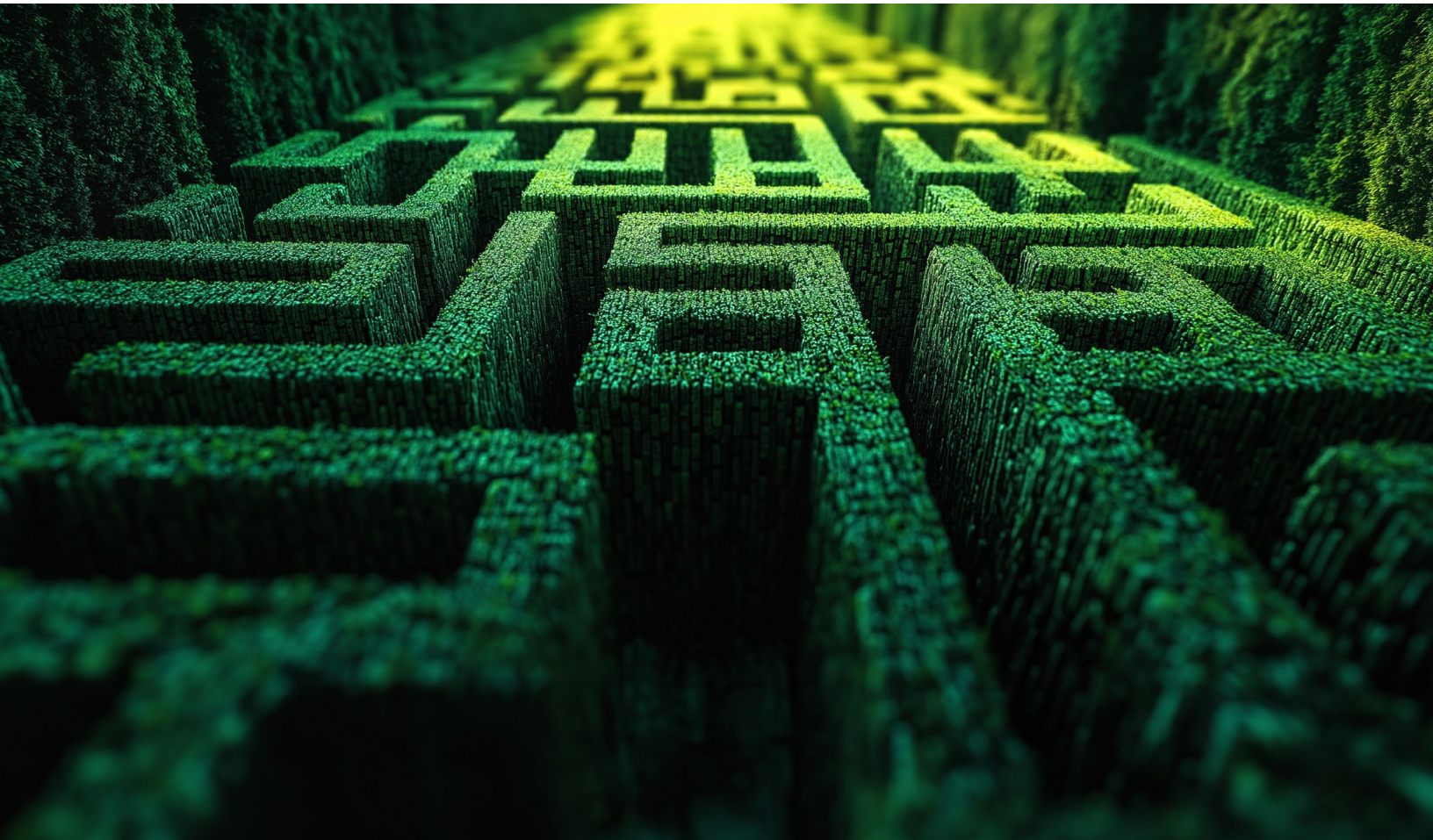


OmniByte 



Revolutionizing Enterprise Operations

The Power of Integrated Digital Forms



In today's rapidly evolving business landscape, enterprise organizations are constantly seeking innovative solutions to streamline their operations, enhance efficiency, and drive informed decision-making. One such transformative tool that has emerged as a game-changer is the integration of smart digital forms into existing enterprise systems. This white paper delves into the critical importance of seamlessly integrated digital forms and their profound impact on organizational success.

As businesses navigate the complexities of the digital age, the need for robust data capture mechanisms at the moment of service has become paramount. Throughout this comprehensive exploration, we will uncover the myriad benefits of implementing smart digital forms, examine features required for enterprise organization and illustrate how this solution can be tailored to meet the specific needs of diverse industries. From enhancing operational efficiency to enabling data-driven insights, the integration of digital forms is poised to revolutionize the way enterprises conduct business in the digital era.

The Evolution of Data Capture in Enterprise Environments

In the ever-changing landscape of enterprise operations, the methods of data capture have undergone a significant transformation. Traditional paper-based forms, once the backbone of information gathering, have given way to more sophisticated digital solutions. This shift has been driven by the increasing need for real-time data, improved accuracy, and seamless integration with existing business systems.

Real-Time Data, Improved Accuracy, And Seamless Integration

From Paper to Digital: A Paradigm Shift

The transition from paper-based forms to digital alternatives marks a pivotal moment in enterprise data management. Paper forms, while familiar, often led to inefficiencies such as manual data entry errors, storage challenges, and delays in information processing. The advent of digital forms addressed these pain points, offering a more streamlined approach to data collection and management.

The Rise of Smart Digital Forms

As technology advanced, so did the capabilities of digital forms. The emergence of smart digital forms represented a quantum leap in functionality. These intelligent forms go beyond simple data entry, incorporating features like real-time validation, conditional logic, and automated workflows. This evolution has significantly enhanced the quality and usability of captured data, making it a valuable asset for decision-making processes.

Integration: The Key to Unlocking Potential

While the shift to digital forms brought numerous benefits, the true potential of this technology is realized through seamless integration with existing enterprise systems. Integrated smart digital forms serve as a bridge between field operations and core business processes, enabling a continuous flow of information across the organization. This integration is crucial for enterprises seeking to leverage data for strategic insights and operational improvements.

The Impact on Enterprise Efficiency

The adoption of integrated smart digital forms has had a profound impact on enterprise efficiency. By eliminating manual data entry and reducing the time between data capture and availability, organizations have seen significant improvements in productivity. Moreover, the accuracy and consistency of data have improved, leading to more reliable insights and better-informed decision-making at all levels of the organization.

Understanding the Critical Need for Seamless Integration

In the realm of enterprise solutions, the concept of seamless integration has moved from being a luxury to a necessity. As organizations grow in complexity and scale, the ability to connect various tools and systems becomes paramount for maintaining operational efficiency and competitive edge.



The Interconnected Enterprise Ecosystem

Modern enterprises rely on a diverse array of software applications and tools to manage different aspects of their operations. From customer relationship management (CRM) systems to enterprise resource planning (ERP) platforms, each tool plays a crucial role in the organizational ecosystem. However, when these systems operate in isolation, they create information silos that hinder the flow of data and impede decision-making processes.

Breaking Down Data Silos

One of the primary challenges faced by enterprises is the existence of data silos. These isolated pockets of information prevent a holistic view of operations and can lead to inefficiencies, redundancies, and missed opportunities. Seamless integration of digital forms with existing systems helps break down these silos, enabling a free flow of information across different departments and functions.

Enhancing Cross-Functional Collaboration

Seamless integration fosters improved collaboration across different functions within an organization. When data from digital forms is integrated with various enterprise systems, it becomes easier for teams to share information, coordinate activities, and work towards common goals. This enhanced collaboration leads to increased productivity, innovation, and overall organizational effectiveness.

The Power of Digital Forms in Enterprise Environments

OmniByte offers industry leading tools including FormsPro and IFS Advanced Forms that are at the forefront of digital form solutions, offering robust platforms designed to meet the complex needs of enterprise organizations. This innovative solution goes beyond simple data capture, providing a comprehensive toolkit for enhancing operational efficiency and driving informed decision-making.

Configurability, Flexibility, & Scalability

Tailored for Enterprise-Level Demands

OmniByte's solutions are built with the understanding that enterprise organizations require more than just a one-size-fits-all approach. The platforms offer a high degree of configurability, allowing businesses to create forms that align perfectly with their specific workflows and data capture requirements. This flexibility ensures that the solution can adapt to the unique needs of different industries and organizational structures.

Advanced Data Capture Capabilities

It is critical to find a solution that leverages cutting-edge technology to enhance data capture accuracy and efficiency. Find a platform that supports a variety of input methods, including text, numbers, signatures, photos, and even GPS coordinates. Advanced validation rules and conditional logic ensure that the data collected is accurate and complete, reducing errors and improving the overall quality of information gathered.

Understanding Your Organizational Workflow

Before diving into configuration, it's crucial to have a clear understanding of your organization's unique workflows and processes. This involves mapping out the journey of data from its point of capture through various stages of processing and utilization. By identifying key touchpoints and data requirements, you can ensure that your digital forms are optimized to support and enhance existing processes.

Configuring Form Fields and Layout

Both Advanced Forms and FormsPro offer a wide range of configurable options for form fields and layouts. Organizations can create forms that mirror their existing paper-based processes or design entirely new layouts optimized for digital interaction. From simple text fields to complex multi-step forms, the platform provides the flexibility to capture data in the most efficient and user-friendly manner possible.

Implementing Business Logic and Validation Rules

To ensure data accuracy and consistency, OmniByte's solutions allow for the implementation of sophisticated business logic and validation rules. These can include conditional fields that appear based on previous responses, mandatory fields that must be completed before submission, and data validation to ensure that entered information meets specific criteria. By embedding these rules directly into the forms, organizations can significantly reduce errors and improve the quality of collected data.

Integrating with Enterprise Systems

One of the key configuration aspects involves setting up integrations with existing enterprise systems. This may include connecting to ERP systems for real-time inventory updates, linking to CRM platforms for customer data synchronization, or interfacing with project management tools for task allocation. The goal is to create a seamless flow of information across the organization, eliminating manual data transfer and ensuring that all systems are working with the most up-to-date information.

Designing User-Specific Interfaces

Different roles within an organization may require access to different types of forms or data fields. Advanced Forms and FormsPro allow for the creation of user-specific interfaces, ensuring that each employee or department has access to the forms and information relevant to their role. This not only streamlines the data capture process but also enhances security by limiting access to sensitive information.



Enhancing Data-Driven Decision Making with Smart Digital Forms

In the age of big data, the ability to make informed decisions based on accurate and timely information is a critical competitive advantage. Smart digital forms play a pivotal role in this process, serving as the foundation for data-driven decision-making across the enterprise.



**Anticipate Challenges
And Opportunities
Before They Materialize**

Capturing High-Quality Data at the Source

The journey to data-driven decision-making begins with the quality of data captured. Smart digital forms ensure that information is collected accurately and comprehensively at the point of origin. By incorporating validation rules and intelligent field types, these forms minimize errors and inconsistencies that can compromise the integrity of downstream analysis and decision-making processes.

Real-Time Data Availability for Immediate Insights

One of the key advantages of smart digital forms is the ability to make data available in real-time. As soon as a form is submitted, the information becomes accessible to authorized personnel across the organization. This immediacy allows decision-makers to respond quickly to emerging trends, issues, or opportunities, enhancing the organization's agility and responsiveness.

Facilitating Predictive Analytics

The structured data collected through smart digital forms serves as an excellent foundation for predictive analytics. By analyzing patterns and trends in historical data, organizations can make informed predictions about future outcomes. This predictive capability enables proactive decision-making, allowing businesses to anticipate challenges and opportunities before they materialize.

Enhancing Collaborative Decision-Making

Smart digital forms facilitate collaborative decision-making by ensuring that all stakeholders have access to the same up-to-date information. This shared view of data promotes alignment across different departments and levels of the organization, leading to more cohesive and effective decision-making processes.

Driving Operational Efficiency Through Integrated Forms

The integration of smart digital forms into enterprise operations goes beyond mere data collection; it serves as a catalyst for significant improvements in operational efficiency. By streamlining processes and automating workflows, integrated forms can transform the way organizations function, leading to increased productivity and reduced operational costs.



Eliminating Manual Data Entry and Transcription

One of the most immediate benefits of integrated smart digital forms is the elimination of manual data entry. Information captured through these forms flows directly into relevant systems, bypassing the need for time-consuming and error-prone manual transcription. This not only saves time but also significantly reduces the risk of data entry errors that can lead to costly mistakes.

Accelerating Process Cycles

Integrated forms play a crucial role in accelerating various business processes. For instance, in a field service scenario, technicians can use digital forms to capture job details, parts used, and customer signatures on-site. This information is instantly available to back-office systems, triggering automated workflows for invoicing, inventory management, and scheduling. The result is a dramatic reduction in process cycle times and improved customer satisfaction.

Enhancing Resource Allocation

By providing real-time visibility into operations, integrated forms enable more efficient resource allocation. Managers can quickly identify bottlenecks, underutilized resources, or areas requiring additional support. This data-driven approach to resource management leads to optimized operations and improved overall efficiency.

Facilitating Compliance and Auditing

In industries with strict regulatory requirements, integrated smart digital forms simplify compliance and auditing processes. These forms can be designed to capture all necessary information for compliance purposes, with built-in checks to ensure completeness and accuracy. The digital nature of these forms also makes it easier to retrieve and review information during audits, saving time and reducing the stress associated with compliance checks.

Conclusion: Embracing the Future of Enterprise Data Management

As we conclude our exploration of smart digital forms and their transformative impact on enterprise operations, it's clear that this technology represents a pivotal shift in how organizations capture, process, and utilize data. The integration of advanced digital forms, exemplified by solutions like FormsPro and Advanced Forms, are not just an operational upgrade—it's a strategic imperative for businesses looking to thrive in an increasingly data-driven world.

The benefits of adopting integrated smart digital forms are multifaceted and far-reaching. From enhancing operational efficiency and streamlining workflows to enabling data-driven decision-making and improving customer experiences, these solutions touch every aspect of enterprise operations. The ability to seamlessly connect with existing enterprise systems ensures that organizations can leverage their current investments while paving the way for future innovations.

For enterprise organizations, the message is clear: embracing smart digital forms is not just about keeping pace with technological advancements—it's about positioning your business for long-term success in a rapidly evolving digital landscape. By investing in these solutions now, companies can build the foundation for more agile, efficient, and data-driven operations that will drive competitive advantage for years to come.

As you consider the next steps for your organization, remember that the journey towards digital transformation is ongoing. The implementation of smart digital forms is a significant step, but it's also part of a broader strategy to create a more connected, intelligent, and responsive enterprise ecosystem.

We encourage you to explore how IFS Advanced Forms or FormsPro can be tailored to meet your specific needs, driving efficiency, enhancing decision-making, and ultimately, propelling your organization towards a more successful and sustainable future. The era of smart, integrated digital forms is here—embrace it, and unlock the full potential of your enterprise data.

